

CG Inkjet Printbox

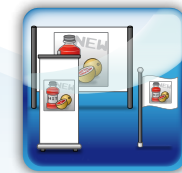
The complete professional solution
for digital inkjet production



Chemical-free
printing-plate
production



Digital proofing
based on
international
standards



High-quality
printing results for
posters, banners,
displays



CG Inkjet Printbox – Pays off for you 3x over right from the start!

Tap into new business opportunities – make your business even more attractive for your customers by adding new offers: as a complete professional solution for digital inkjet production, the CG Inkjet Printbox offers you unbelievable value for the money!



Inexpensive CtP production that remains unrivaled:

chemical-free, environmentally friendly and compatible with many standard offset machines



A convincing advantage in terms of competence:

legally binding digital proofing from plates and printed products according to the latest ISO 12647-7 standard as well as the reference values based on FOGRA 39 guidelines



Brand-new addition to your services portfolio:

print posters, banners and displays as well as large-format photos in high-end quality – with the powerful Productionserver 6 Printbox Edition RIP software from ColorGATE, the technology leader in this field

CG Inkjet Printbox

The services package at an unbelievable price:
Single list prices of all the components: € 13,000.00

Available exclusively from an authorized ColorGATE
sales partner as a complete solution for less than
€ 10,000.00

Check those numbers

The example of printing plate production for the Printmaster GTO 52 makes it obvious: No comparable CtP solution is more attractively priced than the CG Inkjet Printbox, no comparable CtP system entails such low investment costs. Expand your range of services – you save because you no longer need to buy expensive plates from external suppliers.

Example A • 1,000 plates/year

Consumable materials (400 x 511 mm)	
CG IPB metal plate	€ 2.45
CG IPB polyester plate	€ 2.04
Ink costs each	€ 0.14
Subtotal	
CG IPB metal plate + ink	€ 2.59
CG IPB polyester plate + ink	€ 2.18

System price of CG Inkjet Print Box (plus sales tax/VAT)	€ 9,990.00
Annual amortization, amortization period 3 years	€ 3,330.00
Plates/year 1,000	
Amortization/plate	€ 3.33
Total acquisition costs	
CG IPB metal plate	€ 5.92
CG IPB polyester plate	€ 5.51

Example B • 2,000 plates/year

Consumable materials (400 x 511 mm)	
CG IPB metal plate	€ 2.45
CG IPB polyester plate	€ 2.04
Ink costs each	€ 0.14
Subtotal	
CG IPB metal plate + ink	€ 2.59
CG IPB polyester plate + ink	€ 2.18

System price of CG Inkjet Print Box (plus sales tax/VAT)	€ 9,990.00
Annual amortization, amortization period 3 years	€ 3,330.00
Plates/year 2,000	
Amortization/plate	€ 1.66
Total acquisition costs	
CG IPB metal plate	€ 4.25
CG IPB polyester plate	€ 3.84

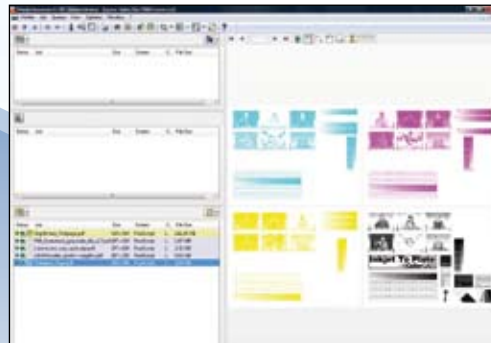


Printing plate production with the CG Inkjet Printbox: Easier and less expensive than ever before



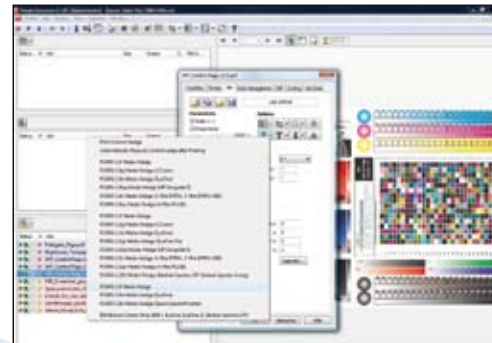
ColorGATE, Europe's leading supplier of innovative system solutions for printing services and color management, sets new standards in printing plate production.

The perfectly coordinated combination of our Productionserver 6 Printbox Edition RIP software with the powerful large-format Stylus Pro 7900 printer from Epson completely eliminates the need for chemicals and exposure in the workflow.



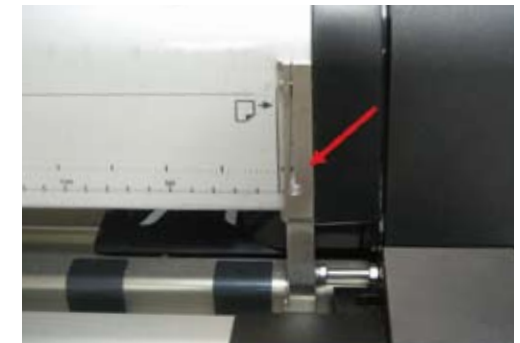
Data preparation

Minimum training time – maximum productivity: thanks to intuitive menu prompting and automatic assistants, the ColorGATE Productionserver 6 Printbox Edition RIP software enables the convenient, efficient preparation and separation of the printing files. Raster settings and the positioning on the printing plate require just a few menu commands. It is possible to process all the popular file formats, such as PS, EPS, TIFF and JPG



along with Composite PDF and separated PDF files (PDF/X-1a, PDF/X-4).

The software includes predefined configurations for amplitude modulation screening up to 150 lpi as well as for frequency modulation screening for fine detail rendering that looks like 180 lpi. Integrated ICC Color Management for color-accurate separation according to input profiles.



Printing

The main hardware used by the CG Inkjet Printbox is the professional large-format Stylus Pro 7900 inkjet printer from Epson. The printer driver specifically developed by ColorGATE for this printer allows top-quality printing and exact plate production using conventional water-based pigment inks. The unique CG plate feeder guarantees the perfect transport and exact positioning of the plate without any retooling.

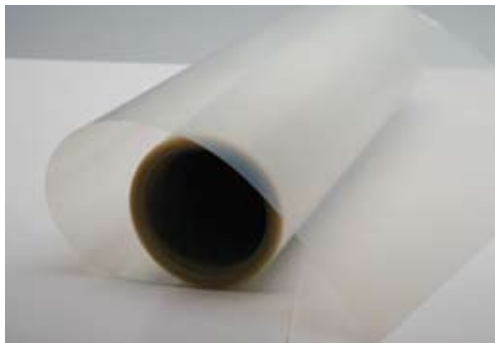


Plate material

Innovative CG printing plate technology demonstrates maximum profitability and outstanding environmental compatibility. No special inks or downstream processes are required for plate production. Plates for quarter- and half-sheet formats are available with an aluminum or polyester base (roll) to be processed in many of the currently popular offset printing presses.

Curing

Chemicals are history – the specially developed CG Plate Curer can now be used to cure the printed plates for printing without the use of any chemicals. This process is also environmentally friendly and saves energy, too. Print runs of up to 20,000 copies are possible.

Printing modes and speeds

Uncoated FM Speed 720 x 720 dpi	3 min/plate
Coated 130 lpi Production 1440 x 1440 dpi	5 min/plate
Coated 140 lpi Production 1440 x 1440 dpi	5 min/plate
Coated 150 lpi Production 1440 x 1440 dpi	5 min/plate
Coated FM High Quality 1440 x 1440 dpi	5 min/plate

Your ace in the hole:

Digital proofing according to international standards with the CG Inkjet Printbox



You save time and money – and offer your customers even greater competence:

the CG Inkjet Printbox with the powerful Productionserver 6 Printbox Edition RIP software enables you to process professional legally binding digital proofing from plates and prints in-house according to the ISO 12647-7 standard and FOGRA reference values.

The RIP software includes the licensed FOGRA media wedge as well as high-quality ICC profiles, among other things, for the FOGRA-certified CG Isoproof media from ColorGATE as well.



Consistent quality control:

Thanks to the unique, assistant-controlled MDS technology (Media Device Synchronization) from ColorGATE, you can calibrate the Epson Stylus Pro 7900 inkjet printer with just a few clicks of the mouse to the reference status of the MIM combination included in delivery and can start to produce prints in best quality right away.

As a high-end calibration tool, MDS is able to iteratively correct even minimal deviations caused by fluctuations in the ambient air or temperature or by any other system changes – for top-quality proofs that comply with measurements and meet all visual requirements.

The perfect addition to perfect proofs:



CG Isoproof • FOGRA-certified

Under the name of CG Isoproof, ColorGATE offers high-quality proof-paper specialties for brilliant color presentation and the finest color nuances even in dark and shadowed areas – FOGRA-certified and optimized for the Epson Stylus Pro 7900 inkjet printer.

How to diversify your services portfolio even more: Large-format printing with the CG Inkjet Printbox



Print posters, displays, banners or large-format photos up to 24 inches (61 cm) in width and in a resolution of up to 2800 dpi:

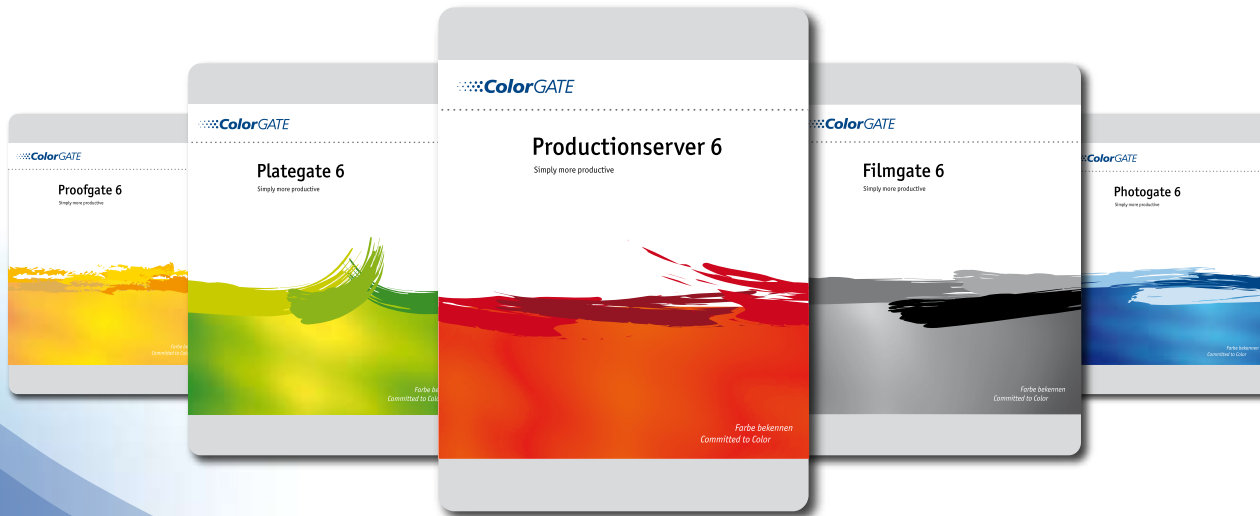
as a complete professional solution, the CG Inkjet Printbox is a convincing system with easy, reliable handling in production and very impressive with brilliant quality and printed products certain to last for decades.

Adapt your workflows individually to your needs:

the highly sophisticated ColorGATE hotfolder technology enables the fully automated output of print jobs according to freely predefined settings and cross-platform processing.

ColorGATE has been among the world's leading developers in high-quality printer drivers for more than ten years. The driver that was specially designed for the Epson Stylus Pro 7900 provides for the ideal interaction between the Productionserver 6 Printbox Edition as RIP software and the printer hardware: perfect results in color and black and white at printing speeds of up to 40 square meters/hour!





ColorGATE RIP software supplies outstanding solutions for maximum productivity, perfect process management and optimum workflow in the fields of imaging, printer drivers, digital proofing, Computer-to-Plate (CtP), Web-to-Print (W2P), Print-to-Cut, large-format printing, campaign printing and textile printing as well as industrial inkjet applications.

ColorGATE Digital Output Solutions GmbH is a leader in the development of powerful ICC profiles and printer drivers for a wide variety of different printing systems and digital printing application areas. The multiple award-winning ColorGATE RIP software, which regularly receives top marks in certification tests, supports the spectrophotometers, cutting tables and cutting plotters of all the well-known manufacturers, thus setting new standards for professional color management.

The company, which was originally formed in 1997, has access to an extensive international service and sales network. Cooperation with authorized sales partners guarantees support designed to meet practical needs.

For more information and consulting services,
please do not hesitate to contact

ColorGATE Digital Output Solutions GmbH
Grosse Düwelstr. 1
30171 Hannover · Germany
Phone: +49 511 9 42 93-0
Fax: +49 511 9 42 93-40
contact@colorgate.com
www.colorgate.com

