

DocBees PROFILE TAGGER

Close the gap inside your colormangement workflow: Analyse and correct the colormangement of delivered PDF and Pixel data

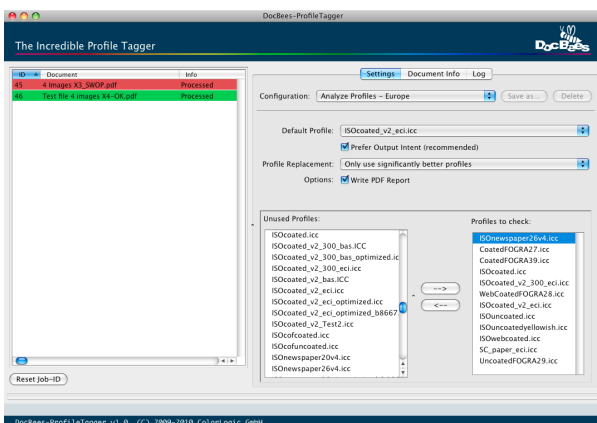
When it comes to handling color data, we can nowadays professionally render and convert almost anything by means of ICC profiles and DeviceLink profiles. All we need is a profile that describes the origin of an image or file, and the profile that tells us where we're heading for. Sounds easy, doesn't it? This approach merely presupposes that we know the source profile and have it at our disposal. Unfortunately, reality paints a very different picture.

Without the matching CMYK source profile, good advice can be very hard to come by – and expensive to boot. After all, the source profile is the decisive factor. It describes the „true“ color identity of a file, e.g. whether a sunshade is blue or turquoise, or whether the lawn looks lush green or dry green. If this source information is missing, creative and prepress staff often have to make an „intelligent guess“ before performing data conversion or the prepress work.

The challenge

Have you ever tried to assign a replacement profile to a file? And have you perhaps also had the fortune of possessing the „true“ profile of the file for comparison? If so, you know about the great uncertainty associated with incorrectly assigned or missing profiles. Especially, if the aim is to preserve the quality of the original image and deliver data optimized for standardized printing at the same time.

Whatever the case, the source profile plays a decisive role as regards color. If no profile is assigned or attached to our data, the big guessing game begins – at least, if no one has the faintest idea of where the data originated from, and enquiries result in nothing more than helpless shaking of heads.



The approaches

So, what can an agency, a customer, a prepress provider or a printer do today to get out of this predicament?

The options are very limited:

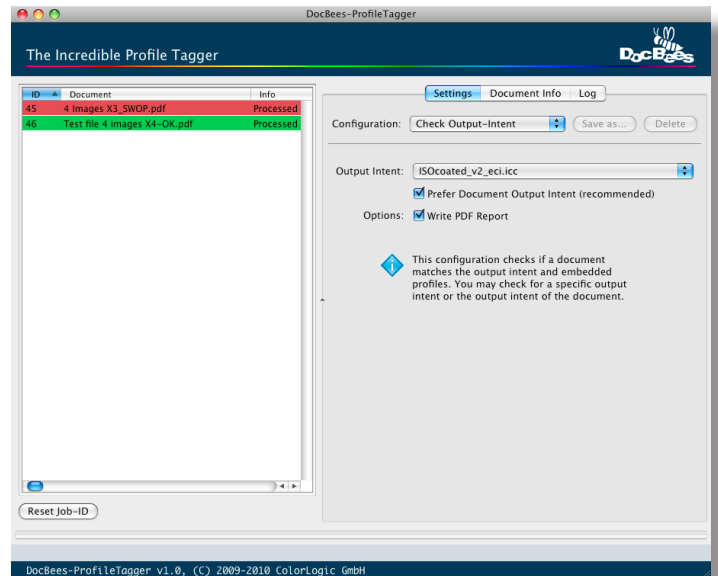
They can try to locate the producer of the data and ask him for the associated ICC profile, or test various existing „standard profiles“ and visually select the one that appears to be the best.

However, assigning profiles by trial and error can sometimes do more harm than good. After all, the recipient, e.g. the printer, takes the assigned information seriously and then complains about the data, or converts them, if the assigned profile does not match the ultimate printing process.

The solution

DocBees Profile Tagger is a very special kind of color management preflighting tool that automatically identifies the profile that suits a CMYK separation best. Working at breakneck speed, the tool analyzes both TIFF and JPEG image data, as well as all images in PDF files, assigns them the most suitable profiles and, if required, embeds these profiles in the files.

For example, the tool enables you to check whether the image data in a PDF/X file match the output intent, or need to be „made to fit“ by means of color conversion. It helps you prevent your data from being incorrectly converted in a downstream color workflow because of an undetected, incorrectly assigned profile (e.g. a US SWOP profile instead of ISO Coated V2 or vice versa).



DocBees Profile Tagger works both by Drag&Drop and on the basis of preconfigured hot folders, and is integrated in Enfocus Switch by means of a Configurator. This link to Enfocus Switch offers a wide variety of automation options, even in complex workflows.

The special features of the tool are the high speed of separation identification, and the accuracy of profile assignment. To identify the most suitable profile, the CMYK values of the image are compared to the CMYK values of the profiles to be tested. The profile providing the best match is assigned to the image.

Interested? Ask your ColorLogic distributor for a demo license to test, how DocBees Profile Tagger may help you to solve your daily production issues.

DocBees REPROFILER

Adapt ICC printer and DeviceLink profiles easily and securely to modified printing conditions

Have you ever faced that? You want to print in accordance with a specified printing standard - an international or an in-house standard - but reality differs slightly to moderately from this standard. In such cases, you can apply the easy-to-use DocBees Reprofiler and, based on the standard profile and just a few measurements of the deviations, very quickly and effortlessly create a new ICC profile and DeviceLink profile that corresponds exactly to your current printing conditions.

Possible uses of the profile optimized with DocBees Reprofiler

Thanks to the optimized printer profile generated by the Reprofiler, you have greatly improved conditions for producing both the soft proof and the hardcopy proof. For example, you can use the Reprofiler profile to obtain a simulation in the proof (hardcopy or soft proof) of what the customer data will look like on your press, and to compare the result with a proof based on the original standard profile.

However, you can also convert your printing data from the standard profile to the new optimized Reprofiler profile in order to again obtain the best possible match between the standard printing conditions and the deviating conditions. You should do the latter with the help of a high-quality DeviceLink profile

created optionally from the Reprofiler. Reprofiler will take care about the correct settings to create the DeviceLink profile.

What would the alternative look like?

The printer can use overinking or underinking in an attempt to correct a printed image that deviates from the proof. However, the possibilities for adjustment are very limited and rarely hold the promise of success. So, the only answer is a new printer profile that characterizes the changed printing conditions. To create a new printer profile, however, you need to produce a very professionally controlled, new print with a large test chart (e.g. ECI2002 test chart), measure several test charts, average them, and create a new printer profile based on the results. This procedure is very complicated, error-prone, time-consuming, and thus expensive.

It is much better to use an existing, high-quality standard profile or in-house profile, and adapt it by means of just a few measurements on the new paper, e.g. of the paper white or of a print control strip, a media wedge or, better still, a wedge supplied by ColorLogic. You can already achieve a marked improvement with just the minimum information required by DocBees Reprofiler - the measurement of the paper white.

The more information you can provide, such as steps of primary colors, overprints and dark tertiary colors - information that is to be found on print control strips - the better the newly created profile will be, and the more accurately the optimized profile will reflect your current printing conditions.

Two variations

DocBees Reprofiler is available in two different variations. The smaller version is able to create optimized ICC printer profiles. The full version is also capable to generate in addition a DeviceLink profile for covering conversion of printing data and complete PDF files in color servers such as ZePrA.

WHY ARE WE FACING PRINTING DEVIATIONS?

Printing deviations regarding color rendering compared to a printing standard can be attributable to various reasons:

- The paper white of the different paper used deviates from that of the standard.
- The paper used has a lower grammage, meaning that not so much ink can be used for printing.
- The overprinting properties of secondary colors can likewise be changed by the use of different papers and colors.
- Use of a process color differing from that of the standard causes slight to moderate color shifts, meaning that the proof and the print no longer match.

